



ATI FirePro™ V7800

Professional Graphics



Command Your Creations



- **Outstanding performance on a single slot low-power high-end professional solution**
- **4.5X computing capability over prior generation²**
- **Support both dual-link DVI and DisplayPort connectivity⁴**
- **ATI Eyefinity capable graphics card¹**
- **Drive up to 3 independent 30" displays⁴ — 12.3 million pixels⁶**
- **2GB GDDR5 memory**
- **High Dynamic Range (HDR) rendering with 8-bit, 10-bit, and 16-bit per RGB color component support**
- **Scalable ultra parallel processing architecture with 1440 stream processors**
- **AutoDetect technology instinctively optimizes performance for multi-application workflow**
- **Hardware acceleration of DirectX® 11 & OpenGL® 4.1 advanced features**
- **Optimized and certified for many major CAD and DCC applications**
- **PCI Express® 2.1 compliant**

Ultra-fast performance, superb visual quality and massively parallel power

Introducing the ATI FirePro™ V7800 workstations graphics card from AMD. This high-end workstation solution features ATI Eyefinity technology¹, 2GB of ultra high speed GDDR5 memory and more than quadruple the computational power of previous-generation products.² With its large frame buffer and a full 30-bit display pipeline³, the ATI FirePro™ V7800 is ideally suited for users who work on complex models and visual effects and need to meet the requirements of demanding visualization jobs.

Based on a new generation GPU with 1440 stream processors, the ATI FirePro™ V7800 ultra parallel processing architecture helps maximize throughput by automatically directing graphics horsepower where it's needed. Intelligent management of computational resources enables enhanced utilization of the GPU to enable real-time rendering of complex models and scenes while increasing frame rates when animating.

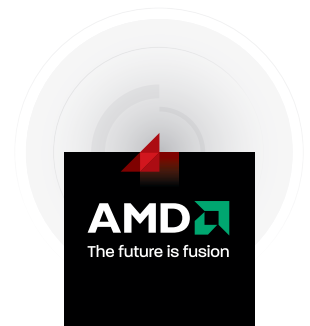
The ATI FirePro™ V7800 features three independent video outputs⁴ (two DisplayPort and one dual-link DVI) with ATI Eyefinity technology¹, providing improvement to productivity at a much lower acquisition and operating cost than multi-card solutions, while only consuming less than 150W in a single slot form factor. In addition, with native multi-card support, users can see more and do more using up to six displays being driven by two ATI FirePro™ V7800 cards in the same workstation.^{4,5}

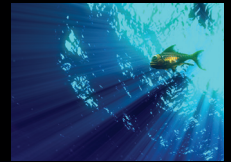
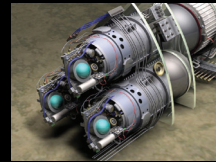
ATI FirePro™ professional graphics cards are thoroughly tested and certified with many major Computer Aided Design (CAD) and Digital Content Creation (DCC) applications, ensuring a level of reliability and compatibility not found in consumer graphics products.

Innovation and Reliability from a Technology Leader

Besides the new and ground breaking ATI Eyefinity technology¹, ATI FirePro™ cards have been engineered to deliver innovation and reliability for a wide range of professional operating environments, including Microsoft® Windows® 7, Windows® XP, Windows Vista® and Linux®. The unified driver, which supports all ATI FirePro™ products, helps reduce the total cost of ownership by simplifying installation, deployment and maintenance.

In addition, ATI FirePro™ products incorporate a unique AutoDetect technology. As users open new 3D applications, or move between them, ATI FirePro™ graphics driver settings are automatically configured for optimized performance of supported applications, no matter what the user's workflow demands.





ATI FirePro™ V7800

Professional Graphics

Features	Benefits
ATI Eyefinity Technology	Advanced multi-display technology delivering highly immersive graphics/computing experience with innovative display capabilities supporting massive desktop workspaces ^{4,1}
AutoDetect Technology	As a user moves between applications, or opens new ones, the graphics driver settings are automatically configured for optimized performance
Full 30-bit Display Pipeline	Enables more color values than 24-bit products for more accurate color reproduction and superior visual fidelity ²
Multi-View Display	With two DisplayPort and one dual-link DVI outputs, Multi-View enables up to three displays with independent display resolution, refresh rate, and display rotation settings ^{4,1}
Full Shader Model 5.0 Support	Create more complex geometry and scenes without taxing the CPU
Certification	There is a high level of assurance when purchasing a configuration that is reliable and provides the performance necessary for professional 3D graphics needs
DirectX® 11 and OpenGL® 4.1 Advanced Features	Great performance, scalability and reliability
OpenCL™ 1.1	Industry standard API - Open, multiplatform development platform for enabling broad adoption of heterogeneous computing ⁷

Ordering Information	
Retail SKU	
Part Number	100-505604
UPC Code	727419415125
Retail Package Weight	2.80 lbs (1.27 Kg)
Retail Package Dimensions	15 x 9.5 x 2.875 in (38.1 x 24.13 x 7.3025 cm)

¹ ATI Eyefinity technology can support multiple displays using a single enabled ATI FirePro™ professional graphics card; the number of supported displays varies by card model. Microsoft® Windows® 7, Windows Vista®, or Linux® is required in order to support more than 2 displays. Depending on the card model, native DisplayPort™ connectors and/or certified DisplayPort™ active or passive adapters to convert your monitor's native input to your card's DisplayPort™ or Mini-DisplayPort™ connector(s) may be required. See www.amd.com/firepro for details.

² Based on 1440 stream processors for ATI FirePro™ V7800 vs. 320 stream processors for ATI FirePro™ V7750.

³ Thirty-bit monitor required for full 30-bit display.

⁴ Each ATI FirePro V7800 professional graphics card supports up to three independent displays, using the two DisplayPort connectors and the one dual-link DVI connector (cables not included).

⁵ Specific power, chassis space, connector, and resource requirements may apply. Check with system manufacturer to see if dual cards are supported.

⁶ 2560 x 1600 resolution required for full 12.3 million pixel resolution.

⁷ OpenCL™ compliant driver and SDK release scheduled in 2010.

⁸ Linux® drivers can be downloaded from support.amd.com.

⁹ Second DVI output supported through one included single-link DP to DVI adapters, dual-link and additional single-link adapters sold separately.

¹⁰ VGA output supported through one included DP to VGA adapter, additional adapters sold separately.

¹¹ Toll free hotline available in North America.

Product Specifications

GPU	
Stream Processors	1440
Memory Interface	256-bit
Memory	
Size/Type	2GB GDDR5
Bandwidth (GB/s)	128.0
Display Outputs	
DisplayPort	2 Standard
Dual-link DVI	1
Max Resolution	2560x1600 @ 60Hz
API/Feature/OS Support	
DirectX®	11.0
OpenGL®	4.1
Shader Model	5.0
ATI Eyefinity Technology Support ¹	Yes
ATI CrossFire™ Pro Support ⁵	Yes
ATI FirePro™ S400 Synchronization Module Support (for Framelock/Genlock)	Yes
Stream Computing	Yes (OpenCL™ 1.1 ⁷)
OS Support	Microsoft® Windows® 7, Windows® XP, Windows Vista®, Linux® ⁸ (32-bit or 64-bit)
Thermal/Power/Form Factor	
Max Power	<150 W
Slot(s)	1
Form Factor	Full Height / Full Length
Support Energy Star® 5.0 Compliance	Yes
Bus Interface	PCI Express® 2.1 x16

Additional Details

System Requirements	<ul style="list-style-type: none"> → 512MB of system memory → CD-ROM drive (or internet access) for software installation → Power supply w/150W for graphics → One 2x3 power connectors
Retail Package Contents	<ul style="list-style-type: none"> → ATI FirePro™ V7800 professional graphics card → Installation CD with drivers and documentation → Quick Start Reference Guide → One DP to DVI (single-link) adapters⁹ → One DVI to VGA adapter¹⁰ → One ATI CrossFire™ Pro connection cable
ISV Certifications	Many major CAD and DCC applications (visit http://ati.amd.com/products/workstation/certified_graphics_accelerators.html for complete listing)
Warranty and Support	<ul style="list-style-type: none"> → Three year limited product repair / replacement warranty → Direct toll free phone and email access to dedicated workstation technical support team¹¹ → Advanced parts replacement option



For more information, visit www.amd.com/firepro